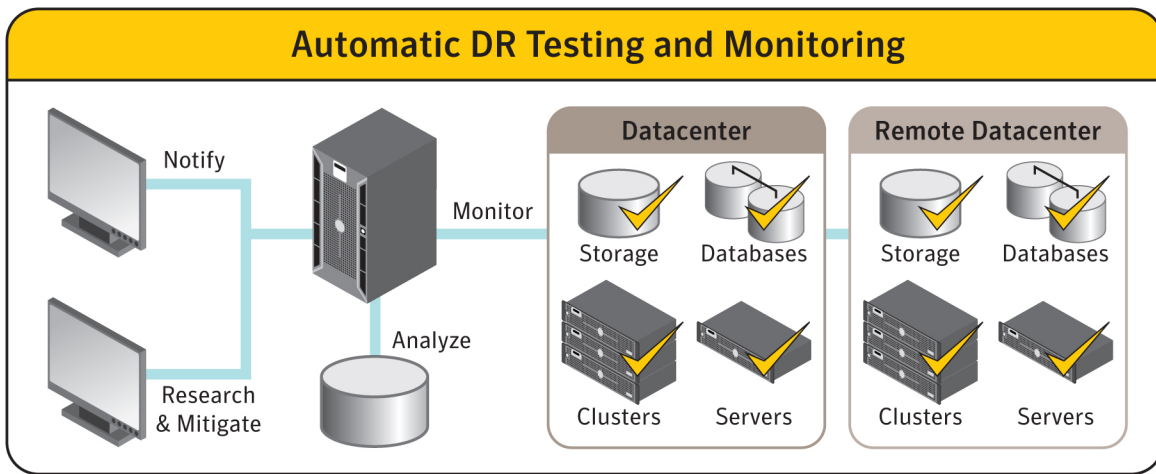


Veritas™ Disaster Recovery Advisor from Symantec

Protect your business by automatically detecting datacenter vulnerabilities while validating your disaster recovery plan

A single undetected configuration error can undermine even the best-designed high availability and disaster recovery (HA/DR) program. A disaster or data corruption event is not the ideal time to discover an issue with a HA/DR plan, and traditional DR testing is not enough to ensure business continuity. Ensure your datacenter's readiness with Veritas™ Disaster Recovery Advisor from Symantec.

Disaster Recovery Advisor is a comprehensive high availability and disaster recovery monitoring and analysis solution that automatically scans the datacenter to detect HA/DR risks and vulnerabilities. It scans storage, servers, databases, clusters, and replication infrastructures using a knowledge base containing over 2,500 risk signatures. When gaps are discovered, the software alerts the system administrator so the issues can be resolved before business operations are impacted. As an agentless solution, the implementation of Disaster Recovery Advisor is unobtrusive and non-disruptive, operating in read-only mode. Monitoring and management is simple with status dashboards that provide detailed insight into the data center's environment. The software is simple to use and easy to manage for system administrators.



Disaster Recovery Advisor automatically scans the production data center and remote replication environments for configuration gaps and data protection vulnerabilities that can impact recovery. The software analyzes the results and provides a detailed description of all detected risks, as well as suggested remediation steps.

Key Features

Agentless and Automatic Scan of Infrastructure

Using industry standard protocols, such as WMI, SSH, Telnet, as well as proprietary vendor APIs, Disaster Recovery Advisor collects configuration information from storage, servers and databases. Then the agent-less software uses the gathered information to scan the entire data center environment. Scans can be scheduled per desired frequency. The software's automatic analysis tools and powerful Gap Detection Engine can detect vulnerabilities that include unprotected databases or database partitions, noncompliant replication configurations, data that cannot be recovered to a valid consistency point, and much more.

Gap Knowledge Base

Disaster Recovery Advisor utilizes a patent-pending knowledge base containing thousands of gap signatures to scan collected infrastructure configuration information in order to detect potential risks to recoverability. The knowledge base is updated automatically whenever new signatures are created.

Optimization Opportunities

Disaster Recovery Advisor also helps improve overall system performance by highlighting unutilized storage space, old and unused copies of storage volumes, database entities and replication configuration changes that improve bandwidth performance.

Integration with System Management Consoles

By integrating with existing system management frameworks (for example, IBM Tivoli® and HP OpenView®). Disaster Recovery Advisor consolidates management capabilities across the enterprise. As the software monitors the infrastructure and detects new gaps, vulnerabilities or protection SLA violations, it immediately sends notification tickets to the system management console, allowing the system operators to proactively mitigate risk before business operations are impacted. See Figure 2.

Enterprise Scalability and Performance

Designed to protect large enterprise data centers, Disaster Recovery Advisor's architecture is built on a distributed approach to allow for monitoring of multiple, geographically dispersed data centers. Agentless scanners can be deployed at any data center to work seamlessly with the Disaster Recovery Advisor enterprise server, to provide a single consolidated view of enterprise-wide DR readiness.

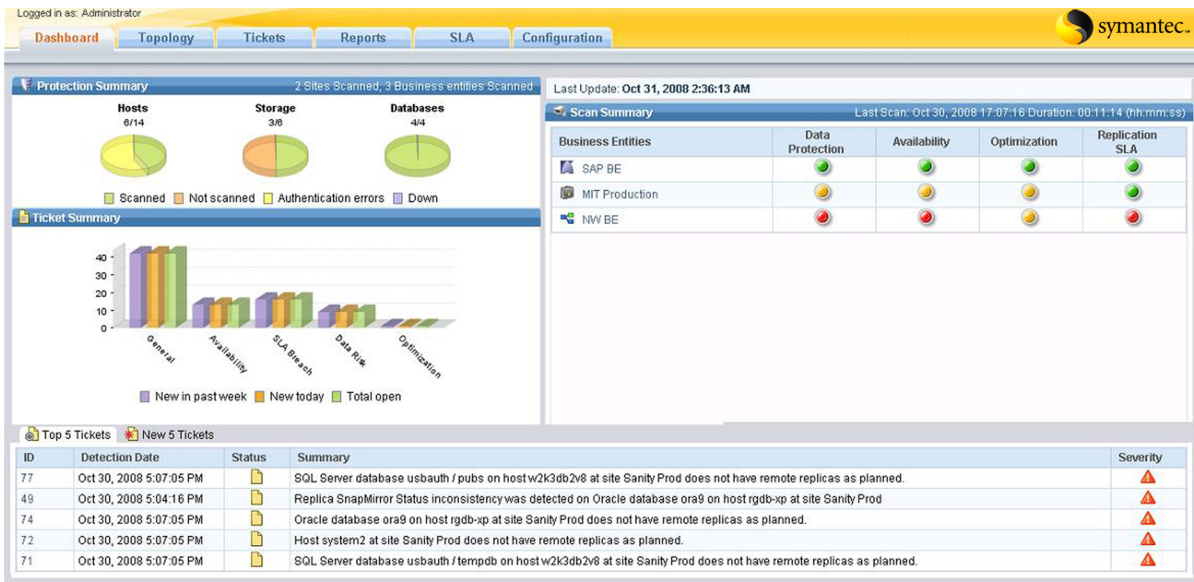


Figure 2

Technical Requirements

The technical requirements for Disaster Recovery Advisor are minimal. They include:

- OS platforms supported : Windows Server® 2003 (32-bit only), Windows Server® 2008 (32-bit only)
- Dual Intel XEON®
- Minimum 2 GB RAM, 4 GB recommended
- 80 GB disk space
- Oracle® 10g

Environments Covered by Disaster Recovery Advisor

Storage

- EMC Symmetrix®
- Hitachi Data Systems®
- NetApp® filers

Operating Systems

- Windows® 200x and XP
- HP-UX 11® and above
- Solaris 8™ and above
- Linux®
- IBM AIX 5L™

Databases

- Oracle
- MS® SQL
- Sybase®
- IBM® UDB

Clusters

- Auto detection of Veritas Cluster Server clusters along with all major cluster environments

Visit Our Website

<http://enterprise.symantec.com>

Contact Us Today

Call toll-free 1 (800) 745 6054

To speak with a Product Specialist outside the U.S.

For specific country offices and contact numbers, please visit our website.

About Symantec

Symantec is a global leader in providing security, storage, and systems management solutions to help businesses and consumers secure and manage their information. Headquartered in Cupertino, Calif., Symantec has operations in more than 40 countries. More information is available at www.symantec.com.

Symantec World Headquarters

350 Ellis St.
Mountain View, CA 94043 USA
+1 (650) 527 8000
1 (800) 721 3934
www.symantec.com