

# McAfee Email Gateway

Total email protection for enterprise environments



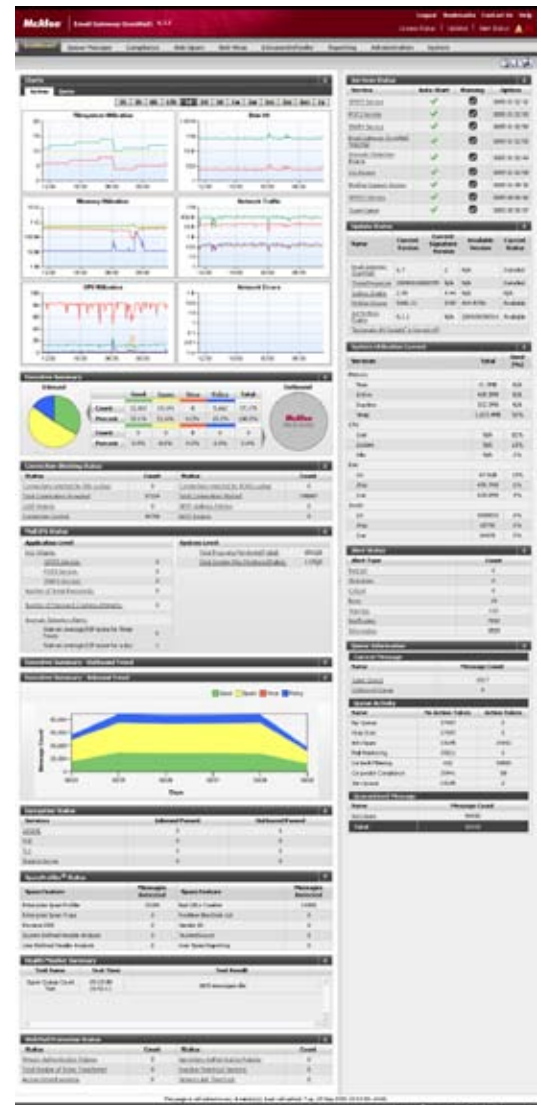
## Comprehensive Protection Against Email-Borne Threats and Data Loss Via Email

Email systems are a prime target for inbound threats, such as spam, viruses, hacking, worms, and Trojans, as well as outbound threats such as corporate or regulatory abuse and data loss. Because modern-day spam and zero-hour viruses can spread around the world in just minutes, you need to take an adaptive, rapid-response approach to defending your company's critical systems. Trusted by the world's largest and most respected organizations, including more than 52 percent of the Fortune 500, McAfee® Email Gateway provides the most effective, comprehensive protection for today's messaging environments. McAfee Email Gateway appliances combine all of the critical technologies required for comprehensive email security into a single, hardened platform that sits in front of your existing mail server to provide immediate protection against inbound and outbound threats of all types.

## Complete Protection Against Inbound Threats

### Powered by McAfee TrustedSource™

McAfee TrustedSource is a global threat intelligence technology that provides predictive security against new and emerging threats. Through a global network of sensors and third-party intelligence sources, it correlates and analyzes the behavior of Internet objects or entities such as host IP addresses, Internet domains, specific URLs, images, and email messages. TrustedSource uses this analysis to calculate the current reputation or "trustworthiness" of interacting with these entities. The TrustedSource network receives billions of reputation queries from McAfee network security appliances every day, assisting customers with protecting their infrastructure against the very latest online dangers without relying on traditional signature-based defenses.



## Better than 99 percent spam detection accuracy

Our solution incorporates McAfee Email Security Message Profiler, which applies a variety of detection techniques to examine thousands of characteristics of every message—generating a precise score that helps determine the probability

#### The Industry Leader in Email Security

- Gartner, Leaders Quadrant, Email Boundary Security Magic Quadrant—2004, 2005, 2006, 2008
- Forrester Research, Leader, The Forrester Wave: Email Filtering, Q2 2009
- Radicatti Group, Top Player—2008
- SC Magazine—Best Email Security Solution 2009
- SC Magazine Best Buy 2007
- SC Magazine Awards 2006—Best Encryption Solution for Healthcare
- Virus Bulletin—VBSpam Gold Award 2009 IDC #1 in SCM Appliances
- Network World 2006—Best Encryption Solution, Editor's Choice Award

that a message is spam, malware, a phishing attack, or some other threat. This technology allows McAfee Email Gateway to deliver better than 99 percent spam detection accuracy, providing customers with peace of mind and superior protection.

#### Total Protection for Enterprise Email Systems

##### Total inbound protection

McAfee Email Gateway appliances provide better than 99 percent spam detection accuracy. You get fully integrated protection against, viruses, malware, phishing, directory harvest (DHA), denial of service (DoS), and bounceback attacks. Stop zero-hour threats in their tracks, thanks to our dynamic spam classifier and threat response updates working in tandem with the TrustedSource global reputation system.

##### Total outbound protection

Get comprehensive protection against the loss of sensitive data via email. McAfee Email Gateway appliances detect both structured and unstructured data including content regulated by HIPAA, PCI, SOX, GLBA, and other government mandates; personally identifiable information such as credit cards, Social Security numbers, and other customer and employee data; and intellectual property such as source code, patents, financial information, and business plans. And when it detects sensitive information, McAfee Email Gateway takes action, supporting six different encryption techniques as well as alerting, re-routing, quarantining, blocking, and other powerful, extensible, and customizable actions.

##### Total administrative empowerment

McAfee Email Gateway empowers you to deliver the best email protection available with the fastest possible performance, enterprise-class scalability, stability, and flexible delivery models to meet your organization's needs. With enterprise-class reporting, exportable report logs, real-time dashboard, and alerts, it also empowers you to monitor and document the protection you're providing in compliance with internal policies and external regulations. And it delivers all this with maximum return on investment (ROI) and minimum administrative overhead.

#### Zero-hour protection against the latest threats

McAfee Email Gateway provides protection from email-borne malware, taking anti-virus beyond simple attachment filtering and actually closing the window of vulnerability between the first emergence of an attack and the availability of protection. McAfee Email Gateway combines multiple malware detection techniques and McAfee anti-virus technology to offer comprehensive protection against email threats in both inbound and outbound mail. Your internal systems are protected and malware outbreaks are prevented by stopping the threat at the gateway.

##### Gateway defense includes:

- *OutbreakDefender*—Provides zero-hour protection against the latest threats
- *T-X days*—Using multiprotocol cross-referenced reputation scores from TrustedSource, McAfee Email Gateway can identify threats even before they emerge
- *Predictive*—McAfee Email Gateway can predict outbreaks based on its integrated anomaly detection engine and file behavior analysis
- *Preventive*—Dynamic quarantine and rule-based attachment blocking enable automatic quarantine of suspicious attachments
- *Reactive*—McAfee Email Gateway provides the unique ability to apply keyword matching, sender, and message reputation scoring

#### Complete Protection Against Outbound Threats

##### Integrated protection against data loss and regulatory compliance support

McAfee Email Gateway includes integrated data loss prevention (DLP) and advanced compliance technologies to protect sensitive data and aid compliance. Sensitive information can be in the form of structured data (account numbers, credit card numbers, personal ID numbers) or unstructured data (regulated data, corporate intellectual property, trade secrets, or engineering schematics). McAfee Email Gateway provides industry-leading email content analysis tools to ensure the tightest control of sensitive content in any form and aids compliance with many state, national, and international regulations. It ships with prebuilt dictionaries for regulations such as HIPAA, GLBA, and SOX, and includes tools for both keyword and document compliance.



"Best Email Security Solution"



Furthermore, it can also integrate with McAfee Network DLP Prevent to enhance the solution's ability to correctly identify sensitive data and assist with its safe handling.

**Policy-based transparent encryption**

McAfee Email Gateway offers multiple encryption technologies without the need for a separate, standalone encryption appliance, ensuring that messages can be delivered and received securely without any end-user action. It supports encryption for both using a simple web interface (pull) or via a secure email (push). McAfee Email Gateway includes enhanced tracking capabilities as well as a customizable webmail client.

- *Business-to-business*—McAfee Email Gateway can encrypt messages from gateway to gateway via industry-standard transport layer security (TLS) as well as legacy systems such as secure/multipurpose Internet mail extensions (S/MIME), and OpenPGP
- *Business-to-consumer*—Recipients with no encryption capabilities can receive encrypted messages from McAfee Email Gateway-protected senders using a simple web interface (pull) or via a secure email (push)

McAfee Email Gateway empowers email administrators to deliver ROI and investment protection without compromising security or compliance requirements. It delivers the features email administrators expect in an enterprise-class security solution:

- Wizard-based installation
- Minimum administrative overhead
- Rich, actionable reporting
- Real-time dashboard and alerts
- Fast and reliable performance
- Scalability and unmatched stability
- McAfee ePolicy Orchestrator® (ePO)™ management platform integration

**Scalable to Meet the Needs of Any Business**

McAfee Email Gateway provides comprehensive inbound and outbound messaging protection for enterprises of all sizes. Our customers include government agencies, service providers, educational institutions, and businesses across a wide range of industries. Choose from four appliance configurations to meet your unique deployment requirements.

**Total Administrative Empowerment**

**McAfee Email Gateway Appliances**

| Model                    | EG-5500                            | EG-5000                     | S120                        | S10                               |
|--------------------------|------------------------------------|-----------------------------|-----------------------------|-----------------------------------|
| Intended number of users | Carrier, ISP, or large enterprises | Medium to large enterprises | Small to medium enterprises | Small office/remote branch office |
| Form factor              | 2U Rack Mount                      | 1U Rack Mount               | 1U Rack Mount               | 1U Rack Mount                     |
| Processor                | 2 Quad Core                        | Quad Core                   | Core2Duo                    | Single Core                       |
| Memory                   | 12 GB                              | 6 GB                        | 4 GB                        | 2 GB                              |
| Disk space               | 800 GB                             | 300 GB                      | 160 GB                      | 160 GB                            |
| Network interfaces       | 4                                  | 4                           | 2                           | 2                                 |

