

# CA Workload Automation r11.1

(Formerly CA dSeries Workload Automation)

CA Workload Automation r11.1 (formerly CA dSeries Workload Automation) helps organizations expand automation capabilities while simplifying the management of complex infrastructure workloads. It does this by directly integrating workload processes and triggering unexpected, business-driven processes.

## Business Value

CA Workload Automation provides advanced automation capabilities to better manage all scheduled and business event-based workloads across the infrastructure in an easy-to-use tool for both IT operations and application developers. With fewer and reusable workload definitions, you can:

- › Reduce maintenance efforts and IT costs
- › Improve visibility, accessibility and manageability of workload processes
- › Deliver faster turnaround on requested business functionality

## Product Overview

CA Workload Automation is a dynamic and flexible solution that allows you to easily automate workload processes across a heterogeneous infrastructure, without the constraints of time/date-based technologies. CA Workload Automation removes the need for “integration” scripts, dummy files/jobs, manual processes and disparate scheduling tools such as cron, native Windows Scheduler, and homegrown scheduling tools. From a single interface, you can define, monitor, control, integrate and report on workloads, regardless of processing platform.

## Delivery Approach

CA has expertise in a wide-breadth of workload automation solutions and can thoroughly assess your current workload automation or job scheduling definitions in order to calculate the effort and timeline of either conversions from existing tools, or new implementations in automation. We will work with you to design, install, configure and deploy the solution to ensure rapid time-to-value, continued automation improvements and ongoing knowledge attainment.

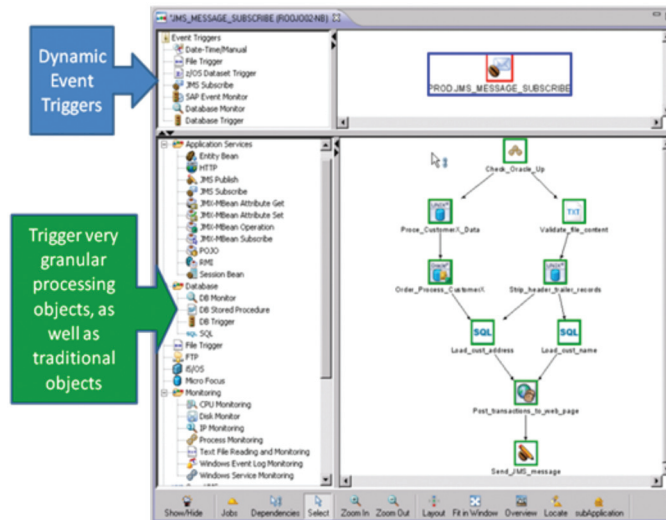
## What's New, What's Compelling?

CA Workload Automation r11.1 (CA Workload Automation) introduces industry-leading agent functionality that delivers bidirectional Web Services integration and new application-services objects. This enables new business processes to be designed and rapidly deployed. Web services, HTTP jobs and comprehensive Java messaging are just some of the additional components that can be interconnected with traditional workload objects, providing an end-to-end automated workload process.

## Features

CA Workload Automation architecture is highly scalable and highly reliable, even from a single workload automation instance. It provides a broad variety of event triggers and sensors, allowing you to manage both scheduled as well as unexpected business-event-triggered processes, without preloading all possible workload processes. Additional features include:

- Built-in, intuitive critical path management to track workload and provide automatic alert notification, including initial remediation
- File transfer capabilities included in core solution, not an add-on
- Extensive variable substitution to minimize definitions of jobs, files, message objects, etc.
- Built-in reporting tools that include Gantt charts
- Auditing and version control capabilities
- Fault-tolerant Manager/Agent communication benefits
- Ability to manage mainframe workload via z/OS agent or Microfocus Agent
- Eclipse-based drag-and-drop interface for quick and intuitive definitions
- Exception-based single point of management, both graphical and text-based
- Comprehensive resource management, including extensibility to provisioning and configuration automation
- Use of built-in conditional logic and Javascript for flexible scheduling
- Built-in scheduling criteria to automate calendar management



CA Workload Automation allows both IT operation and application designers to exploit automation capabilities to directly connect infrastructure workload processing objects and improve development time. All workload processes, with all possible variations, can be defined in one flexible workload definition, resulting in a faster, smarter, more responsive automation tool. With CA Workload Automation, you can more efficiently manage exceptions that could impact your business as well as eliminate the cost and complexity of maintaining multiple operating and application scheduling products.

## Why CA?

CA Workload Automation is built on proven architecturally advanced automation principles, and is not an extension of job scheduling fundamentals. The result is better efficiencies, wider IT usage and higher value.

CA is the market leader in job scheduling.<sup>1</sup> CA has designed, deployed and automated workloads across some of the largest and most complex IT enterprises in the world. CA Workload Automation is part of CA's vision for Enterprise IT Management (EITM). CA offers a comprehensive stack of advanced IT automation solutions that includes Workload Automation, automated resource provisioning and configuration management, and IT process and runbook automation.

<sup>1</sup>Worldwide Systems Operations Software 2007 Vendor Shares, IDC, 2008

Copyright © 2009 CA. All rights reserved. All trademarks, trade names, service marks and logos referenced herein belong to their respective companies.

This document is for your informational purposes only. CA assumes no responsibility for the accuracy or completeness of the information. To the extent permitted by applicable law, CA provides this document "as is" without warranty of any kind, including, without limitation, any implied warranties of merchantability, fitness for a particular purpose, or noninfringement. In no event will CA be liable for any loss or damage, direct or indirect, from the use of this document, including, without limitation, lost profits, business interruption, goodwill or lost data, even if CA is expressly advised in advance of the possibility of such damages.