

PRODUCT SHEET:

CA Application Configuration Manager

CA Application Configuration Manager

we can



CA Application Configuration Manager (CA ACM) automates configuration management across the enterprise. It allows you to reduce downtime and accelerate troubleshooting by discovering unplanned or unapproved configuration changes before they impact performance and availability.

Business value

Managing application and infrastructure configurations across physical and virtual systems is one of the toughest challenges facing IT today. Configuration management is error-prone, labor-intensive, and time-consuming. Effective configuration management requires a solution that addresses all of these challenges.

With CA ACM, you can help:

- Increase operational efficiency by automating configuration management
- Enforce compliance policies and reduce overall risk
- Correct unwanted configuration drift before it causes downtime

“State-of-the-art change and configuration management tools will be needed to keep up with increasing operational complexity, particularly in organizations that cannot add head count to keep up with requirements.”

Source: IDC,
Worldwide Change
and Configuration
Management Software
2010–2014 Forecast,
#222330, March 2010

Product overview

CA ACM automates the lifecycle of configuration management, including discovery, change management, and compliance auditing.

Discovery

Automatically discover the servers and software applications running in the datacenter. Conduct a comprehensive inventory of the configuration settings for each server and application discovered. Understand the dependencies and relationships between IT services and the underlying IT infrastructure.

Change management

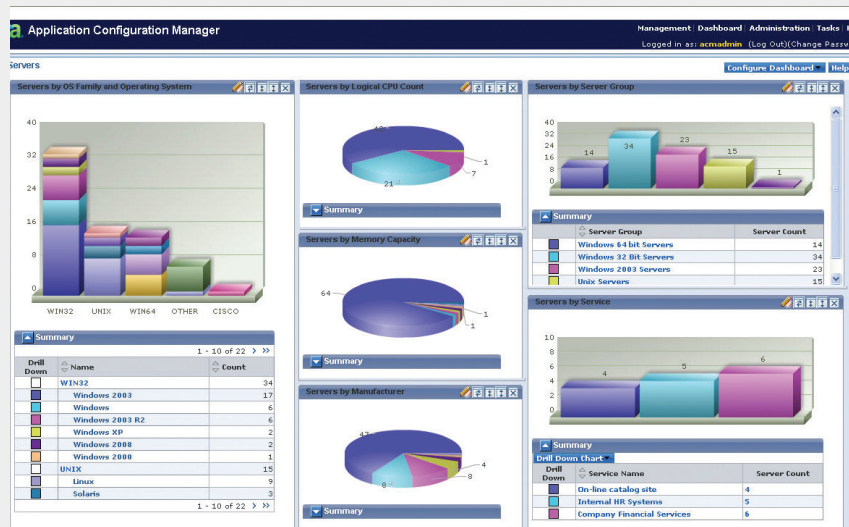
Capture configuration data and dependency information into snapshots. Each snapshot is stored and can be archived into a historical record. Accelerate problem isolation by searching snapshots to find configuration changes. Leverage snapshots to improve release management and migration planning. Track and compare configurations to approved baselines and “gold standards.” Detect configuration drift and quickly remediate configuration errors by automatically restoring configuration settings to approved standards.

Policy compliance

Use compliance rules to check that server and application configurations adhere to compliance policies. Use CA ACM’s built-in rules to facilitate compliance with industry standards such as PCI, NIST, and DISA. Enforce security policies by validating that configurations adhere to industry best practices.

Figure A

Dashboards provide a summary view of what servers are deployed.



“Managing change and ensuring that configuration changes do not create security breaches and violate service levels, availability, acceptable use, communications, and information management policies are high-priority objectives for companies looking to enhance their IT compliance and risk management posture.”

IDC, Worldwide Governance, Risk, and Compliance Infrastructure Taxonomy, 2010 #222182, March 2010

Features

Agentless and agent-based software discovery

Use either an agentless approach or agents for software discovery. Agentless discovery enables you to conduct a comprehensive inventory without having to install software. Agents provide more security and more detailed discovery.

Profile-based discovery

Use profiles to schedule discovery and management operations to run on a recurring basis. With Server Management Profiles, you specify when and what configuration management operations to perform. For example, using Server Management Profiles, you could schedule when configuration snapshots are taken or how often configuration compliance should be verified.

Configuration snapshot-based management

Configuration snapshot management enables you to detect file- and parameter-level changes in software component configurations. Simply take a snapshot of your configuration settings at any point and compare it to previous or future snapshots to detect change. You can also create a baseline snapshot or “gold standard” to detect servers that are out of compliance.

Blueprint-based management

Several hundred blueprints are included in the built-in knowledge base supporting major web servers, application servers, databases, messaging systems, network devices, and operating systems (Windows, Linux, Solaris, AIX, and HP/UX). Using standard blueprints enables you to quickly discover instances of a component, locate its configuration files, extract configuration settings, and determine dependencies and relationships. With the built-in Blueprint Editor, you can create blueprints to support your custom applications.

Best practices database

Over 1,000 built-in industry configuration best practices policies are included out-of-the-box. Your IT staff can customize best practices for your IT environment by adding new policies as needed.

Rules-based compliance

This unique feature enables you to assign rules and policies at the file and parameter levels. Changes are automatically tracked and you are notified when there is a violation.

Reporting	Service management	Custom attributes	Import and export	Security
Provides pre-defined dashboard reports with view, print, export, and scheduled e-mail delivery	Groups servers and specific software components as an application service that you can snapshot and search for changes or rules compliance	Enables you to define and add your own attributes to individual servers	Imports a known list of servers to accelerate server discovery or business attributes from an asset-management application	Provides comprehensive, customizable, role-based administration and controls access to the target server

Benefits

CA ACM helps you create a more dynamic and agile datacenter by helping to:

- Increasing operational efficiency while lowering costs
 - **Increase utilization of IT staff** Automate routine configuration tasks and redeploy IT staff to more strategic projects.
 - **Improve delivery of IT services** Reduce the time it takes to configure a server for deployment.
- Enforcing compliance policies and reducing overall risk
 - **Demonstrate control to IT auditors** Use compliance rules to automatically perform audit scans. Quickly identify and remediate policy violations.
- Improving availability and proactively prevent datacenter outages
 - **Reduce downtime** Proactively detect configuration drift before it causes a data center outage. Automatically restore configurations to approved “gold standards.”

Copyright ©2010 CA. All rights reserved. All trademarks, trade names, service marks, and logos referenced herein belong to their respective companies. This document is for your informational purposes only. CA assumes no responsibility for the accuracy or completeness of the information. To the extent permitted by applicable law, CA provides this document “as is” without warranty of any kind, including, without limitation, any implied warranties of merchantability, fitness for a particular purpose, or noninfringement. In no event will CA be liable for any loss or damage, direct or indirect, from the use of this document, including, without limitation, lost profits, business interruption, goodwill, or lost data, even if CA is expressly advised in advance of the possibility of such damages. CA does not provide legal advice. No software product referenced herein serves as a substitute for your compliance with any laws (including but not limited to any act, statute, regulation, rule, directive, standard, policy, administrative order, executive order, and so on (collectively, “Laws”) referenced herein or any contract obligations with any third parties. You should consult with competent legal counsel regarding any such Laws or contract obligations.