

CA ARCserve D2D

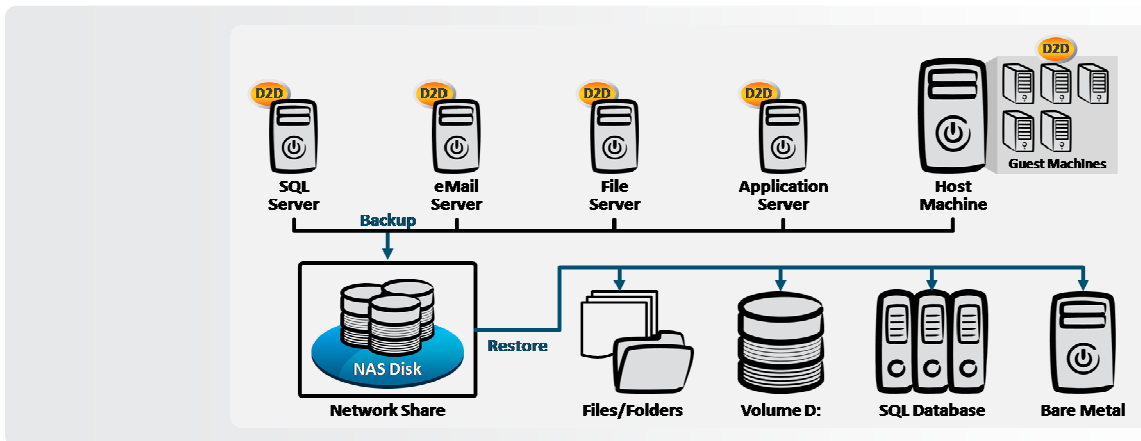
A new disk-based recovery product that can keep up with your changing business.

CA ARCSERVE D2D GIVES YOU PRACTICAL DATA PROTECTION AND NEAR INSTANTANEOUS RECOVERY FOR YOUR BUSINESS WITH EASY-TO-USE TOOLS, INNOVATIVE TECHNOLOGY AND EXCEPTIONAL PERFORMANCE.

For IT managers, downtime can turn into find-a-new-job time.

CA ARCserve D2D is a new disk-based backup product that makes recovering your data on both physical and virtual servers a snap. An innovative Web 2.0 interface proactively feeds you updates that let you confidently meet and manage your recovery SLAs. It is the only product that has Bare Metal Restore to dissimilar hardware and block-level infinite incremental snapshots, based on CA's patent-pending I² technology™ in one package¹.

Like data deduplication, I² technology™ will drastically reduce your backup window, network traffic, disk storage and load on your production applications.



Here's the hard data:

BLOCK-LEVEL INFINITE INCREMENTAL BACKUP Like deduplication, this patent-pending technology uses less storage space, performs backups faster and puts less of a load on your production servers. Disk-to-disk backups are based on CA's block-level I² technology™ that has been designed to intelligently manage backing up only blocks of data that have changed since the last backup and presenting a consolidated point-in-time view of the protected volume for multiple recovery types.

PROTECTION FOR VIRTUAL SERVERS Provides a single user interface to help protect virtual servers as well as physical servers, saving training time and simplifying operations. Block-level I² technology™ helps to reduce backup time, storage space, network usage, workload on the production servers and recovery time for virtualized servers.

SINGLE SNAPSHOT BACKUP WITH FOUR RESTORE TYPES Provides the ability to rapidly restore files, volumes, databases, or the entire system to any server in both physical and virtual environments from a single-pass backup. One snapshot helps ensure recovery of the data in the most efficient manner.

BARE METAL RECOVERY TO DISSIMILAR HARDWARE Bare Metal Restore offers a very fast way to recover a crashed server to the same or dissimilar hardware. It simply paints the picture of the original drive back onto the new drive and restarts the system – reducing a process that can potentially take as much as 36 hours to just minutes.

[1] As of February 2010.

APPLICATION-CONSISTENT SNAPSHOT BACKUPS Ensures that the application is being properly quiesced and backed up from a consistent state for rapid application recovery. Application-specific actions are available to support proper application management during the backup process.

DYNAMIC DOCUMENTATION WITH WEB 2.0 INTERFACE Provides documentation updates proactively delivered to your desktop. Fast and easy access to the latest product documentation pushed to you via the CA ARCserve D2D User Interface.

POINT-IN-TIME BACKUP VIEW Provides a full point-in-time view of the disk for rapid recovery of files, folders, volumes and databases.

HIGH-FREQUENCY BACKUPS New I² technology™ provides the ability to perform backups every 15 minutes for greater levels of protection and improved Recovery Point Objectives.

END USER SEARCH AND RESTORE Find and recover file- and folder-level items from user data sets without administrator intervention.

USE WITH CA ARCSERVE® BACKUP Enables migration of the CA ARCserve D2D backup files to tape using CA ARCserve Backup r15 for off-site long-term retention.

USE WITH CA ARCSERVE® REPLICATION AND HIGH AVAILABILITY Provides the ability to replicate CA ARCserve D2D backup images to a remote location for an additional level of protection or rapid recovery in the event of a data center outage.

REMOTE OFFICE / BRANCH OFFICE PROTECTION Use CA ARCserve Replication with CA ARCserve D2D to backup all ROBO office data to local disk, and then replicate the backup files to a central location. These files can then be backed up to tape using CA ARCserve Backup for long-term off-site archiving.

SUPPORTED PLATFORMS AND APPLICATIONS Provides backup of Microsoft Windows 2003 and 2008 on 32- and 64-bit platforms and Microsoft Exchange (2003, 2007, 2010), SQL Server 2005 and 2008 databases. Also supports VMware, Hyper-V and Citrix XenServer virtualization platforms.

The benefits in plain English:

ONE AND DONE CA ARCserve D2D gives you more control over your changing environment with a “set it and forget it” solution that makes protecting your data a snap.

SAVE STORAGE Like data deduplication, CA ARCserve D2D’s single snapshot backup with infinite incremental snapshots, based on CA’s I² technology™ moves just the data that has been changed and quickly restores the entire disk to any previous backup point in time.

KEEP IT SIMPLE Easy to install and use, CA ARCserve D2D is a disk-based backup product designed to provide the perfect combination of fast, simple and reliable protection and recovery for all of your information.

BE THE HERO CA ARCserve D2D has a new innovative Web 2.0 interface that proactively feeds you updates, helping you confidently meet and manage your recovery SLAs. Save money with the only product that has Bare Metal Restore to dissimilar hardware and block-level infinite incremental snapshots in one package.

A PERFECT FIT Use as a first backup system or as part of a complete solution that provides additional data protection with faster backups and bare metal restore to dissimilar hardware.

Now just imagine yourself behind the wheel.

Take CA ARCserve D2D for a free test drive at arcserve.com/software-trials. For more information on CA ARCserve D2D, go to arcserve.com or contact your authorized reseller or your local CA representative at arcserve.com/contact/rmdm. Request a proposal today and give your business or organization the protection it deserves.

Try it now, visit arcserve.com/software-trials

Copyright © 2010 CA. All rights reserved. Linux is a registered trademark of Linus Torvalds in the United States, other countries, or both. UNIX is a registered trademark of The Open Group in the United States and other countries. Microsoft, Windows, Windows NT, and the Windows logo are trademarks of Microsoft Corporation in the United States, other countries, or both. All other trademarks, trade names, service marks and logos referenced herein belong to their respective companies.

